

Wastewater handling for cruise vessels at Ports of Stockholm

2025





Table of contents

1	Definitions	3
2	Rules and regulations	4
3	Receiving capacity.....	4
4	Shore connections	5
4.1	Flanges.....	5
5	Appendix – Map of cruise quays and receiving max capacities	8



1 Definitions

In order to avoid any confusion of terminology, the following definitions have been adopted by the Ports of Stockholm in regards to sewage and sewage handling.

Food waste is not permitted to be mixed with sewage. If any amount of black water is mixed with grey water, the mixture will be classified as black water.

Term	Definition	Port Reception?
Sewage (black water)	1. drainage and other wastes from any form of toilets and urinals; 2. drainage from medical premises (dispensary, sick bay, etc.) via wash basins, wash tubs and scuppers located in such premises; 3. drainage from spaces containing living animals; or 4. other waste waters when mixed with the drainages defined above.	Yes.
Sullage (grey water)	Grey water is drainage from dishwater, galley sink, shower, laundry, bath and washbasin drains and does not include drainage from toilets, urinals, hospitals, and animal spaces, as defined in regulation 1.3 of MARPOL Annex IV and does not include drainage from cargo spaces.	Yes.
Wastewater	Sewage and sullage	Yes.
Sewage treatment plant water, such as <i>AWP*</i> and <i>MSD**</i>	Wastewater from sewage which has been treated on-board in sewage treatment plant.	Only if it does not meet the requirements for discharge within the Baltic Sea Special Area and therefore is classified as sewage.
Bio residues/ bio sludge	Residues from sewage that has been processed in the on-board treatment plant.	No.

**AWP – Advanced Wastewater Treatment*

***MSD – Marine Sanitation Device System*



2 Rules and regulations

As from the 1st of June 2021 a new regulations has entered into force, MEPC.275(69), which stipulates that vessels must have a sewage treatment plant in accordance with MEPC.227(64) in order to be permitted to discharge any sewage in the Baltic Special Sea area.

MARPOL Annex IV, as amended, regulates the handling of wastewater from ships. Furthermore, it is regulated on a national level by the Swedish Transport Agency regulation TSFS 2010:96.

Prices and terms can be located at Ports of Stockholm's webpage.

3 Receiving capacity

Ports of Stockholm has the following maximum receiving capacity for its cruise quays. For a map and locations the port reception facilities, please see the appendix.

Quay	Max receiving capacity	Max pressure permitted	Hose connection size	DN size
V511	>400 m ³ /h	3 bars	4"	100 - 200
V515	75 m ³ /h	3 bars	4"	100 - 200
F625	200 m ³ /h	3 bars	4"	100 - 200
F638	200 m ³ /h	3 bars	4"	100 - 200
F634	200 m ³ /h	3 bars	4"	100 - 200
F650/F655*	70 m ³ /h*	3 bars	4"	100 - 200
S167	200 m ³ /h	3 bars	4"	100 - 200
S160	75 m ³ /h	3 bars	2,5"	100 - 150
S155	200 m ³ /h	3 bars	4"	100 - 150
S105	30 m ³ /h	1,5 bars	2,5"	100 - 150
Boj1	N/A	N/A	N/A	N/A
Nynäshamn/ Seawalk	N/A	N/A	N/A	N/A

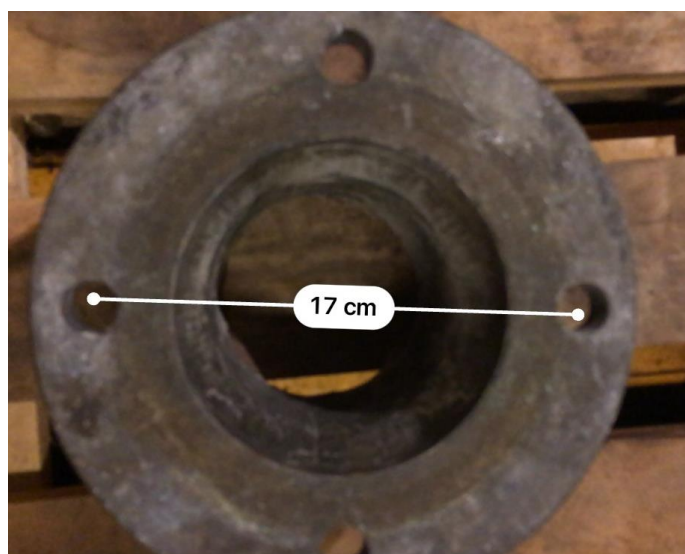
**Currently under development to increase capacity*



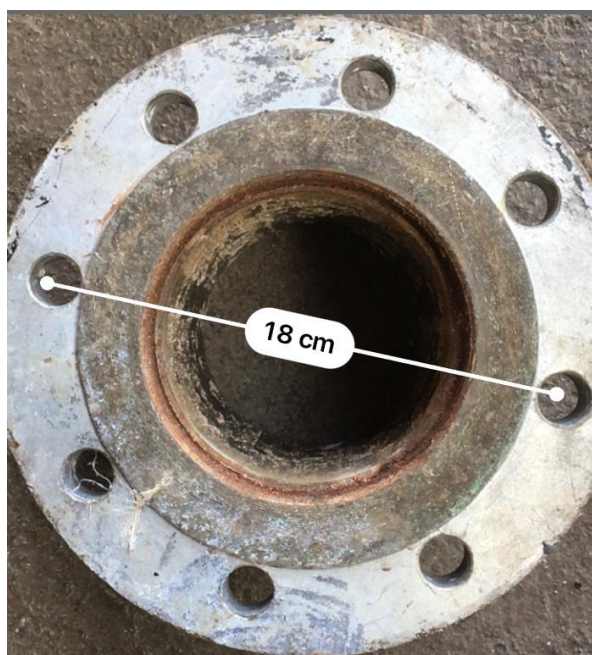
4 Shore connections

4.1 Flanges

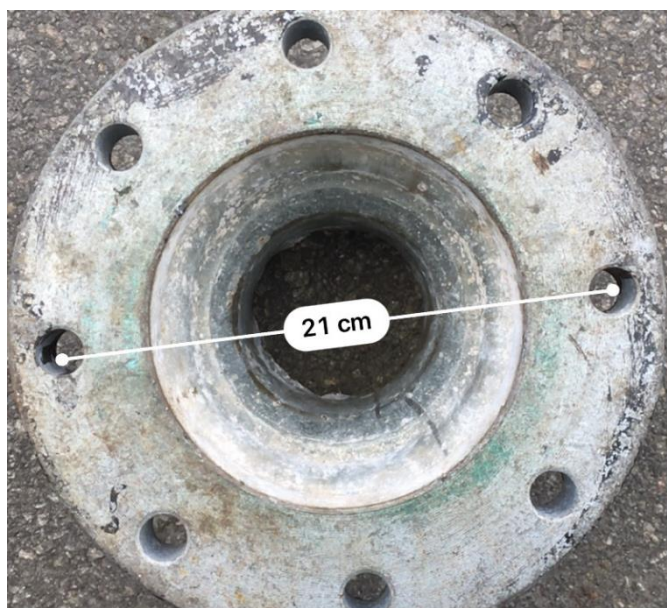
The following flanges are available shore side for connecting to the direct flow sewer system ashore. Please note that the vessels own flange is to be used to connect to the ports hose. The distance from the vessel to a shore connection point is never longer than 60 meters on all quays.



Flange 1. DN 100, 4 inches – 4 holes



Flange 2. DN 100, 4 inch – 8 holes



Flange 3. DN 125, 5 inch – 8 holes



Flange 4. DN 150, 6 inch – 8 holes



Flange 5. DN 200, 8 inch – 8 holes